

STERLING STUDIOS

DECOREX09
INTERNATIONAL

HAND PAINTED
DECORATION



CONTEMPORARY
AND
TRADITIONAL DESIGNS
ON GLASS, LEATHER, GESSO, RESIN
WOOD, CANVAS & PAPER

TEL: 020 8453 9360
FAX: 020 8453 9379
info@sterling-studios.com
www.sterling-studios.com

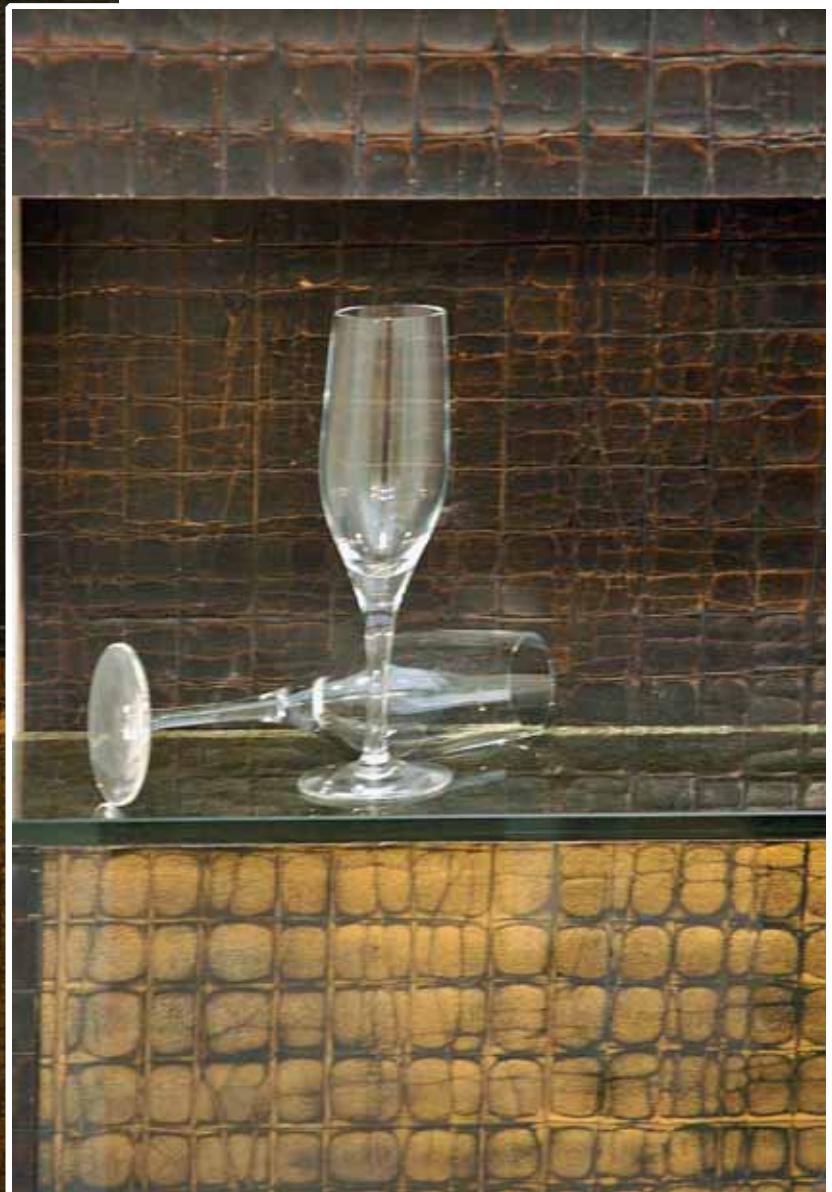


- * Cornice: Off white lacquer with moongold verre eglomise strips
- * Wall finish: lacquered ripple gesso
- * Mirror: Antiqued glass with cushion profiled silver-gilt verre eglomise frame
- * Trim: Silver gilt verre eglomise
- * Skirting: Off white lacquer with moongold verre eglomise strips



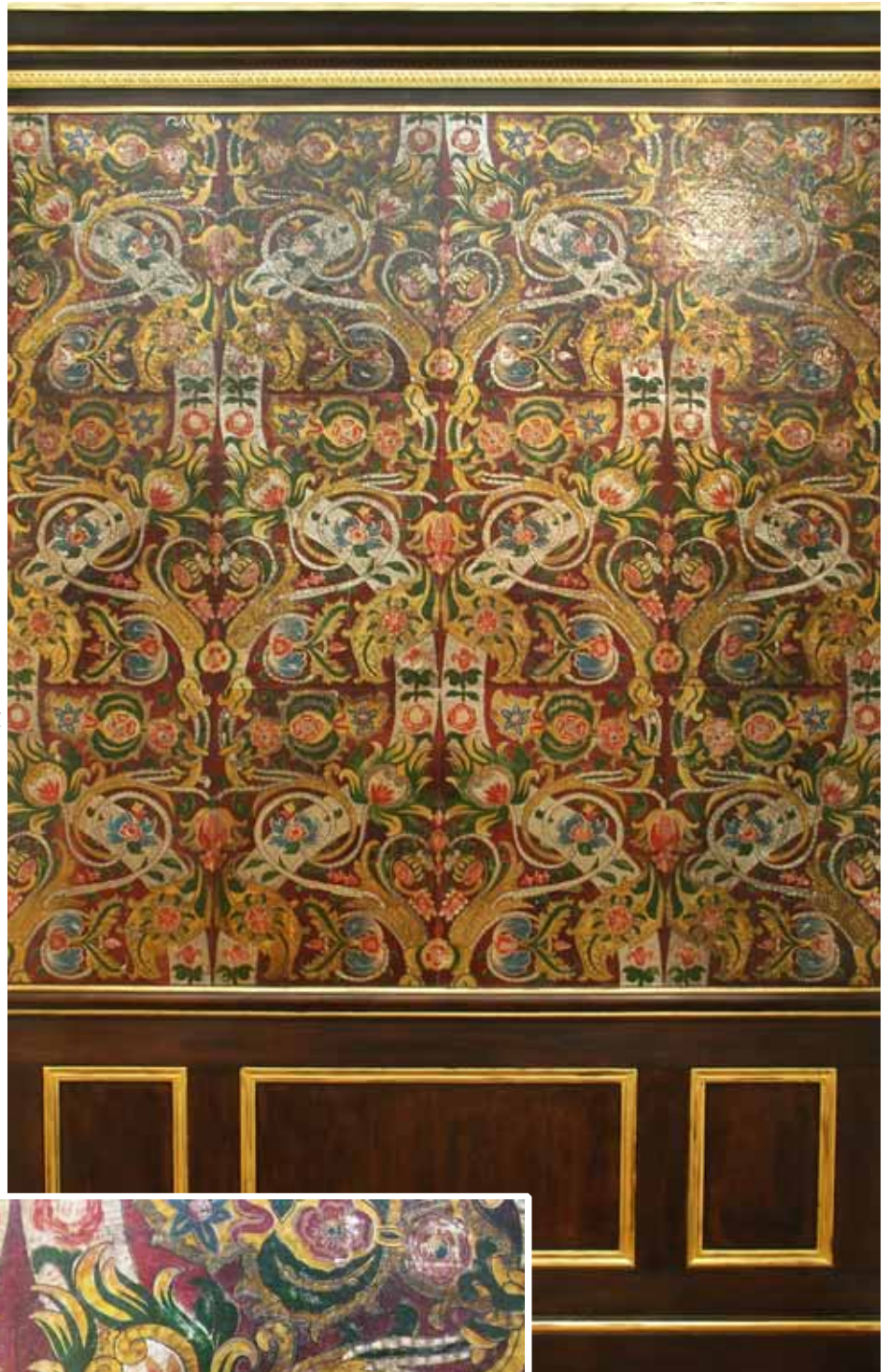


- * Cornice: Heavily carved cast 'gesso' in dark brownny bronze
- * Wall finish: Heavily carved cast 'gesso' in dark brownny bronze
- * Shelf: Glass, reverse painted with leaf, resins and bronze powders
- * Panel: Reverse 'carved' glass in gold and dark bronze
- * Skirting: Heavily carved cast 'gesso' in dark brownny bronze



Sterling Studios is pleased to have received a BIDA Award for "Outstanding Quality and Design Innovation" at Decorex 2009.

- * Cornice: Antique brush grain paint finish with 24 ct gold lines
- * Wall: Hand stamped leather panels with a pattern of scrolls, leaves and flowers in blue, green, red, silver and gold on a crimson ground
- * Dado rail: Antique brush grain paint finish with 24 ct gold lines
- * Dado panels: Antique brush grain paint finish with 24 ct gold lines
- * Skirting: Antique brush grain paint finish with 24 ct gold lines





- * Cornice: lightly antiqued white leather
- * Wall: Horizontal panels of raised embossed slightly antiqued white leather
- * Handles: Very kindly donated by Danny at Beardmore
- * Door: lightly antiqued white leather centre, with a raised embossed border and antiqued brass trim
- * Wall: patinated brass border with design
- * Skirting board: Patinated brass with design



- * Cornice: Ivory, fine cracked gesso
- * Panels: texture painted glass in a patinated sea green finish
- * Handles: Very kindly donated by Danny at Beardmore
- * Panels: Texture painted glass with scallops in a patinated eau de nil finish
- * Trim: Bronze patinated brass doubled rods
- * Skirting: Ivory, fine cracked gesso

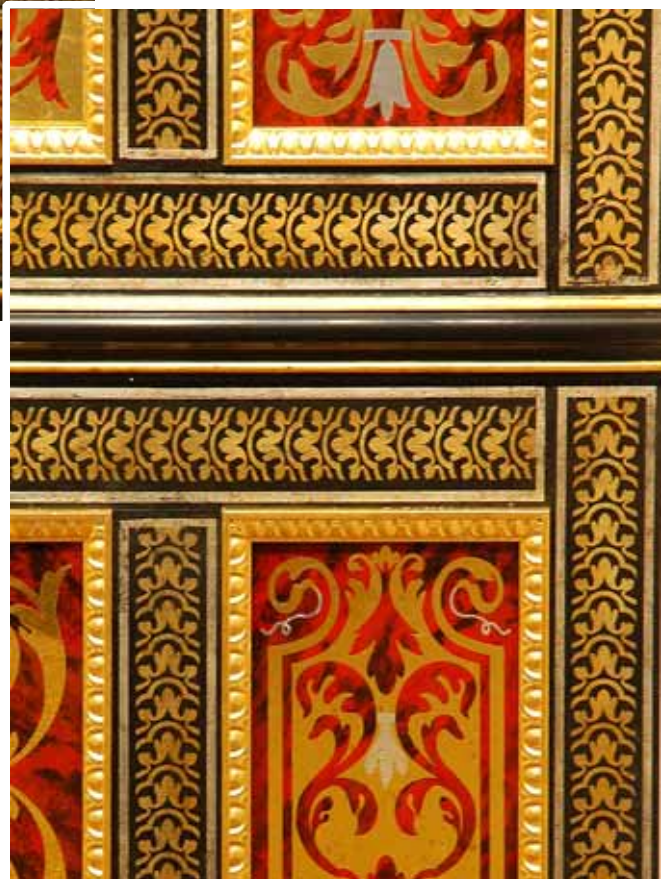




- * Cornice: Stone paint effect
- * Panels: Double layered decoration depicting a bird cage with birds and branches on a ground of softened silver
- * Skirting: Stone paint effect

- * Cornice: Driftwood paint effect in blue green
- * Panels: Images of a carp pool, design taken from antique Japanese Kimono fabric. Background, patinated mirror with softened blue backpainting
- * Handles: Very kindly donated by Danny at Beardmore
- * Skirting: Driftwood paint effect in blue green

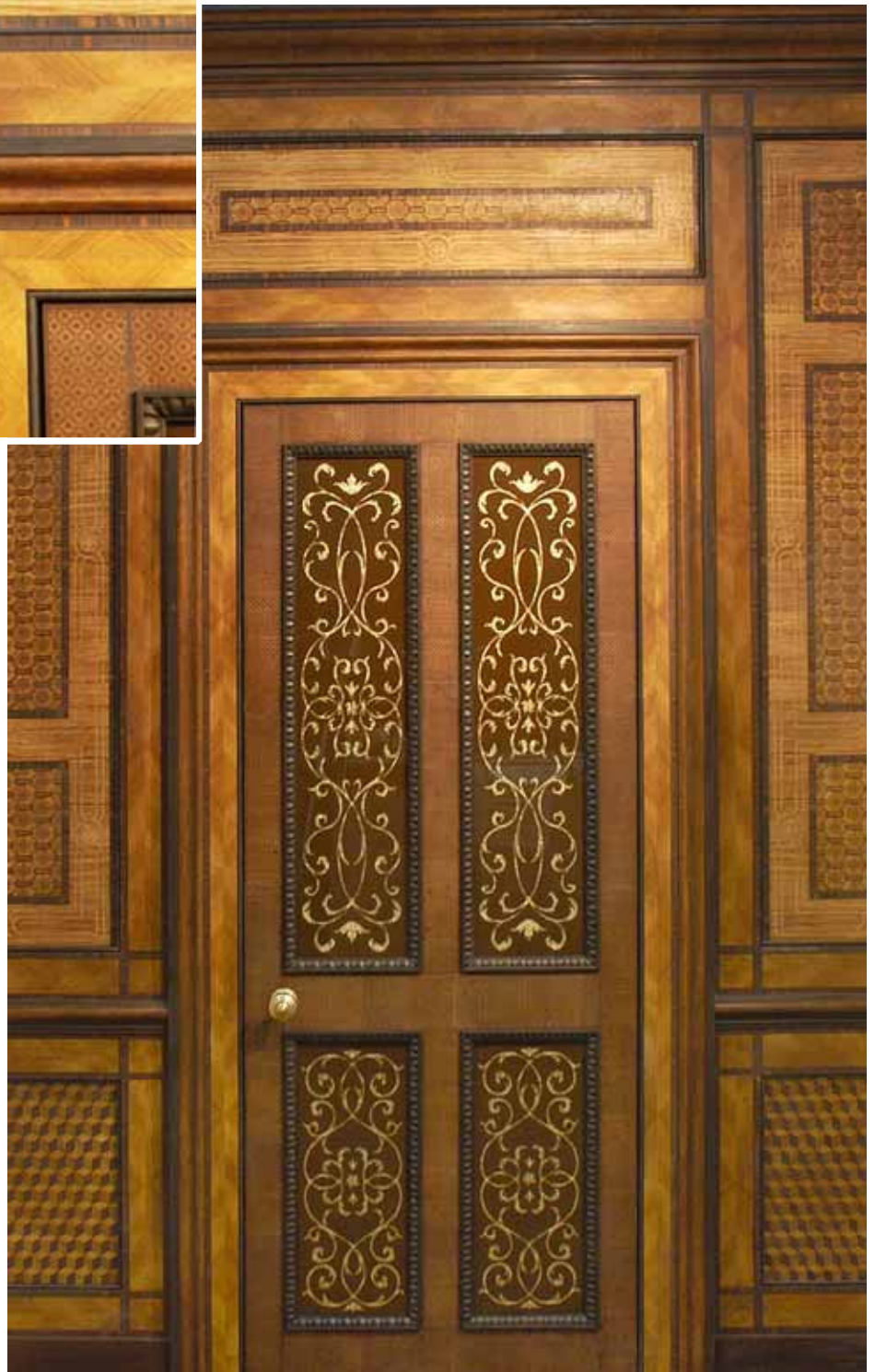




- * Panels: Reverse painted glass in red tortoiseshell, with patinated 24 ct gold and silver decoration
- * Panel mouldings: Watergilt in 24 ct gold and slightly antiqued
- * Styles and rails: Hand printed and hand finished silver and black wallpaper
- * Woodwork: Hand lacquered with 24 ct gold lines



- * Walls and woodwork: antiqued hand painted and printed inlaid woodgraining
- * Panel mouldings: Finished in antique metallic effect
- * Door Panel: Reverse painted and gilded glass
- * Handle: Unlacquered brass very kindly donated by Danny at Beardmore



- * Cornice: An antique off white paint finish with 24 ct gold lines
- * Walls: Eglomise glass with an 18th century style white hand print of cherubs, scrolls, flowers and ribbons on a textured golden ground
- * Dado rail: An antique off white paint finish with 24 ct gold lines
- * Dado panels: An antique off white paint finish with 24 ct gold lines
- * Skirting: An antique off white paint finish with 24 ct gold lines





- * Glass Rosettes
- * Walls: Acrylic panel with a leaf motif on a silver textured ground
- * Moulding wrapped in creased aluminium

